



The women's body warmer

Fitted XS > XXL 75 GSM

Details

- Sleeveless
- High collar
- Reverse nylon zip at center front
- Zipped welt pockets with extra grosgrain puller
- Elastic tape binding at armhole
- Fully quilted
- Side panels for better shape
- Inside seams with binding finish
- Bottom hem with adjustable plastic stopper and elastic cord

Composition

Shell - Plain Weave
100% Polyester - Recycled - 75 GSM
Fluorine-free DWR
Padding
100% Polyester - Recycled -

Lining - Plain Weave
100% Polyester - Recycled
Fluorine-free DWR

Care

Wash similar colours together, no ironing, wash inside out. Close all zips before washing.

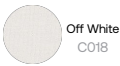


Country of origin

Weaving : China
Dyeing : China
Assembly : Bangladesh or China



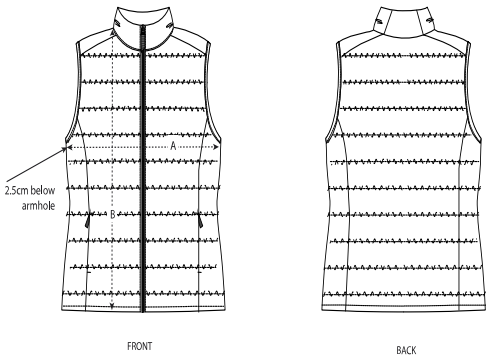
Whites



Colors



Size Guide



Sizes		XS	S	M	L	XL	XXL
A	Half Chest	47	50	53	56	59	62
B	Body Length	58	60	62	64	66	68

Packing

Sizes	XS	S	M	L	XL	XXL
Pieces/bag	5	5	5	5	5	5
Pieces/box	10	10	10	10	10	10